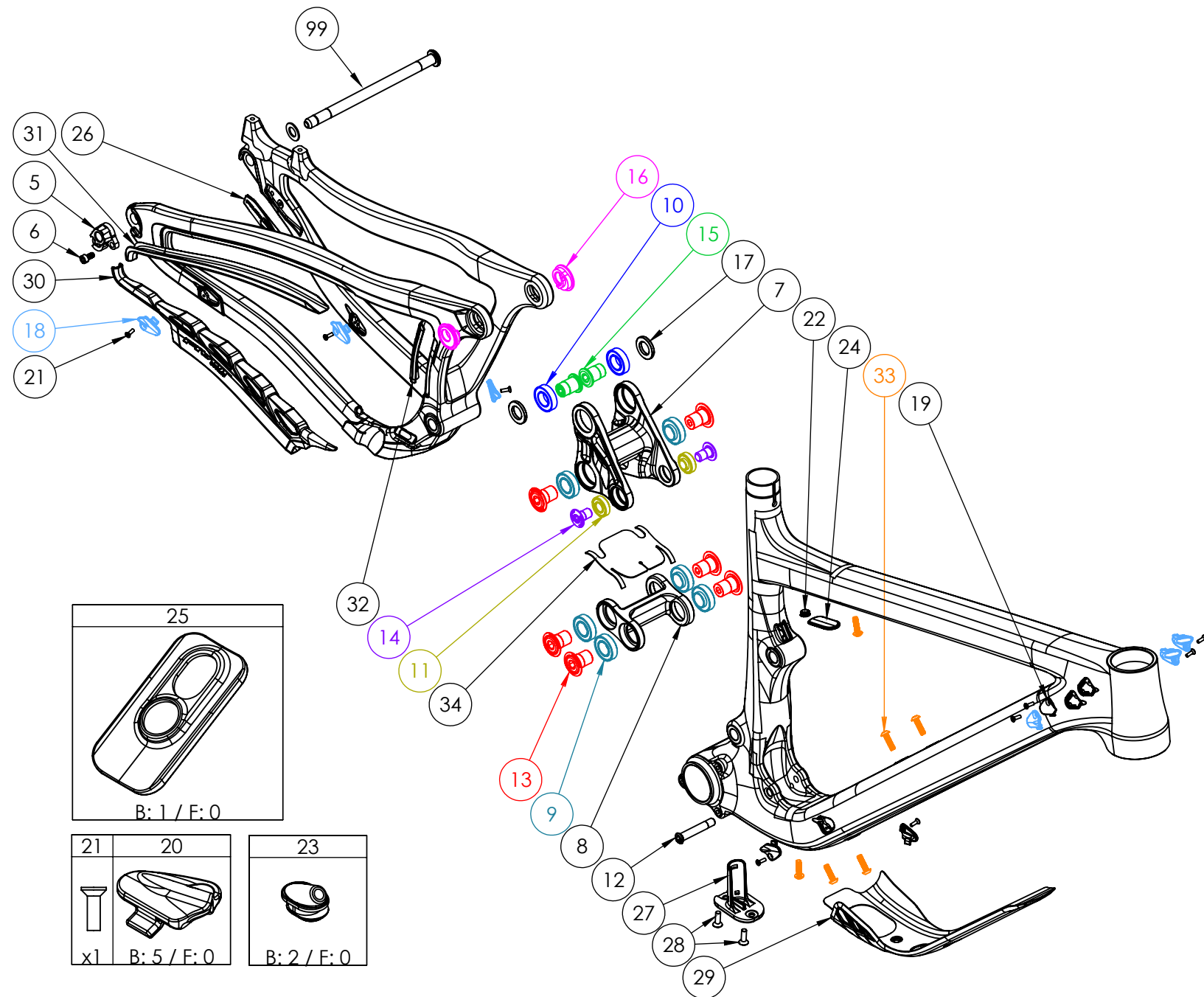


**SWITCHBLADE CARBON V2**

NUMBER	PART NAME	DESCRIPTION	Torque	*
5	FP-RDH-TA-12MM-BLK-V3	Rear Derailleur Hanger 12mm TA		
6	FP-SCW-SCK-M5*10	M5x10 Rear Derailleur Hanger Screw	7 Nm (5 lb-ft)	○
7	FP-LNK-UL-72MM-V1-R1	72mm Upper Link		
8	FP-LNK-LL-34MM-EXT-V1	34mm Out-to-Out Extended Lower Link		
9	FP-BRG-6902-LLUMAXECN	28mm 6902 Extended Max-E Bearing	**	
10	FP-BRG-6902-LLUMAX	28mm 6902 Standard Max Bearing	**	
11	FP-BRG-6900-LLUMAXE	22mm 6900 Ext'd Max-E Bearing	**	
12	FP-BLT-M8*45.7-BLK-V1	M8 Front Shock Bolt for 30.1mm Shock Spacing	13 Nm (10 lb-ft)	●
13	FP-BLT-M14*20-BLK-V2	M14x20 Link Bolt	35 Nm (27 lb-ft)	□
14	FP-BLT-M10*16.5-BLK-V1	M10 Trunnion Mount Bolt	13 Nm (10 lb-ft)	□
15	FP-BLT-M14*20-BLK-V3	M14x20 Flip Chip Bolt	35 Nm (27 lb-ft)	□
16	FP-NUT-FLIPCHIP-4.6MM-V1	4.6mm Flip Chip		
17	FP-WSH-SPC-151*250*3W	M14x3mm Flip Chip Spacer		
18	FP-CLM-MECH-FRM-V1	Internal Routing Cable Clamp		
19	FP-CVR-MECH-FRM-V2	Internal Routing Hole Cover		
20	FP-CLM-DUAL-FRM-V1	Internal Routing Dual Clamp		
21	FP-SCW-FLT-M3*10	M3x10 Cable Clamp Screw (Included w/ Clamp)		
22	FP-PLG-DI2-7*8*2.5	7x8mm Di2 Plug		
23	FP-GDE-DI2-7*8*2.5*2.5	7x8mm Di2 Wire Guide		
24	FP-CVR-FLV-TT-V1-R1	Fox Live Cover Plate		
25	FP-WSH-FLV-CNTRLMT-V1-R1	Fox Live Controller Mount Spacer		
26	FP-CVR-FLV-ACC-V1-R1	Fox Live Accelerometer Cover		
27	FP-CVR-DI2-DT-V1	Di2 Downtube Battery Holder		
28	FP-SCW-FLT-M5*16	M5x16 Di2 DT Battery Cover Screws (Included with cover)		
29	FP-PRO-SBCV2-DT-XS-S-V1-R1	Switchblade V2 Downtube Protector (XS, S)		
29	FP-PRO-SBCV2-DT-M-L-XL-V1-R1	Switchblade V2 Downtube Protector (M, L, XL)		
30	FP-PRO-SBCV2-CS-V1-R1	Switchblade V2 Chainstay Protector		
31	FP-PRO-SBCV2-SS-V1-R1	Switchblade V2 Seatstay Protector		
32	FP-PRO-SBCV2-UR-V1-R1	Switchblade V2 Upright Protector		
33	PIVOT WB BOLTS V2	M5x0.8x18 Zinc Plated Steel Water Bottle Bolts		
34	FP-PRO-34MM-EXT-LL-V2-R1	34mm Out to Out Extended Lower Link Protector		
99	157MM THROUGH AXLE V3	12x157mm Thru Axle w/ Washer		○



\*\* See Bearing Assembly Procedure located in the tech specs section at [www.pivotcycles.com](http://www.pivotcycles.com)

\* ○ = grease ● = anti-seize ◐ = anti-seize or grease □ = loctite 243