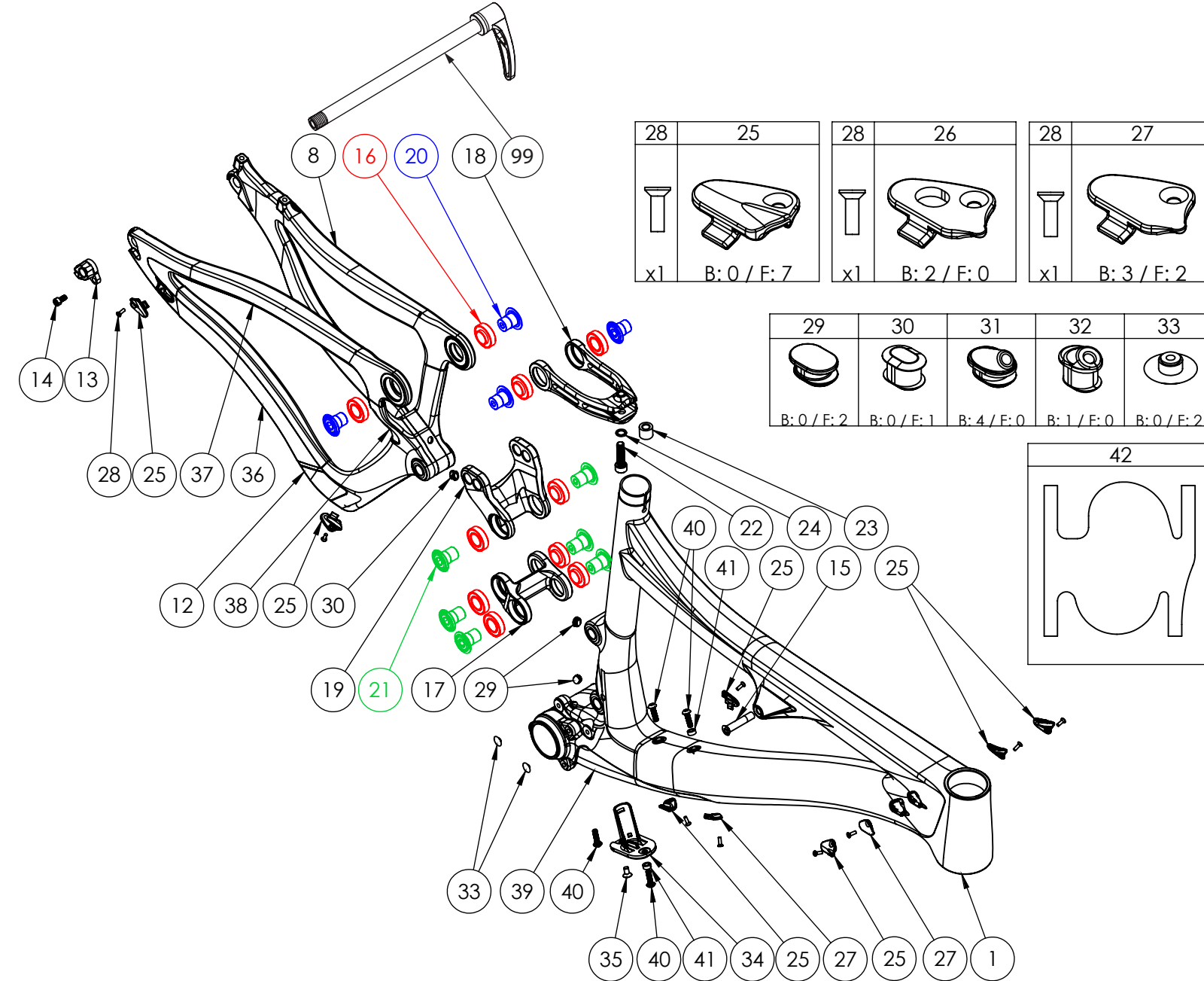


MACH 6 CV3

NUMBER	PART NAME	DESCRIPTION	Torque	*
13	FP-RDH-TA-12MM-BLK-V3	Rear Derailleur Hanger 12mm TA		
14	FP-SCW-SCK-M5*10	M5x10 Rear Derailleur Hanger Screw	7 Nm (5 lb-ft)	○
15	FP-BLT-M8*38-BLK	M8x38 Front Shock Bolt	13 Nm (10 lb-ft)	●
16	FP-BRG-6902-LLUMAXECN	28mm 6902 Ext'd Max-E Bearing		
17	FP-LNK-LL-BLK-V4-R1	34mm Out-to-Out Lower Link V2 (+6mm Front Width)		
18	FP-CLV-104MM-V1-R1	104mm Clevis (For M, L, XL)		
18	FP-CLV-94MM-V2-R1	94mm Clevis (For XS,S)		
19	FP-LNK-UL-57MM-V2-R1	57mm Upper Link V2		
20	FP-BLT-M14*17-BLK	M14x17 Upper Link Bolt	35 Nm (27 lb-ft)	□
21	FP-BLT-M14*20-BLK-V2	M14x20 Lower Link Bolt	35 Nm (27 lb-ft)	□
22	FP-SCW-SCK-M8*30-R1	M8x30 Clevis Screw	28 Nm (21 lb-ft)	●
23	FP-PIN-CLV-M8*150-BLK-R2	M8 Clevis Shock Adapter Pin		
24	FP-WSH-8I*120*1W	M8 Shock Bolt Washer (For Clevis Screw)		
25	FP-CLM-MECH-FRM-V1	Internal Routing Cable Clamp		
26	FP-CLM-DI2-FRM-V1	Internal Routing Di2 Clamp		
27	FP-CVR-MECH-FRM-V2	Internal Routing Hole Cover		
28	FP-SCW-FLT-M3*10	M3x10 Cable Clamp Screw (Included w/ Clamp)		
29	FP-PLG-DI2-7*8*2.5	7x8mm Di2 Plug		
30	FP-PLG-DI2-7*8*5	7x8mm Di2 Plug Ext'd		
31	FP-GDE-DI2-7*8*2.5*2.5	7x8mm Di2 Wire Guide		
32	FP-GDE-DI2-7*8*5*2.5	7x8mm Di2 Wire Guide Ext'd		
33	FP-PLG-MNT-6MM	6mm Plug for E-type FDM		
34	FP-CVR-DI2-DT-V1	Di2 Downtube Battery Holder		
35	FP-SCW-FLT-M5*16	M5x16 Di2 DT Battery Cover Screws (Included with cover)		
36	M6CV3 CS GUARD	Mach6 Chainstay Protector		
37	M6CV3 SS GUARD	Mach6 Seatstay Protector		
38	M6CV3 UR GUARD	Mach 6 Upright Protector		
39	M6CV3 DT GUARD	Mach 6 Downtube Protector		
40	PIVOT WB BOLTS V2	M5x0.8x18 Zinc Plated Steel Water Bottle Bolts		
41	PIVOT WB BOLT SPACER	M5 Water Bottle Bolt Spacer		
42	FP-PRO-34MM-LL-V1-R1	34mm Lower Link Protector		
99	DT SWISS 148 RWS	DT SWISS 148 RWS		○



** See Bearing Assembly Procedure located in the tech specs section at www.pivotcycles.com

* ○ = grease ● = anti-seize ● = anti-seize or grease □ = loctite 243