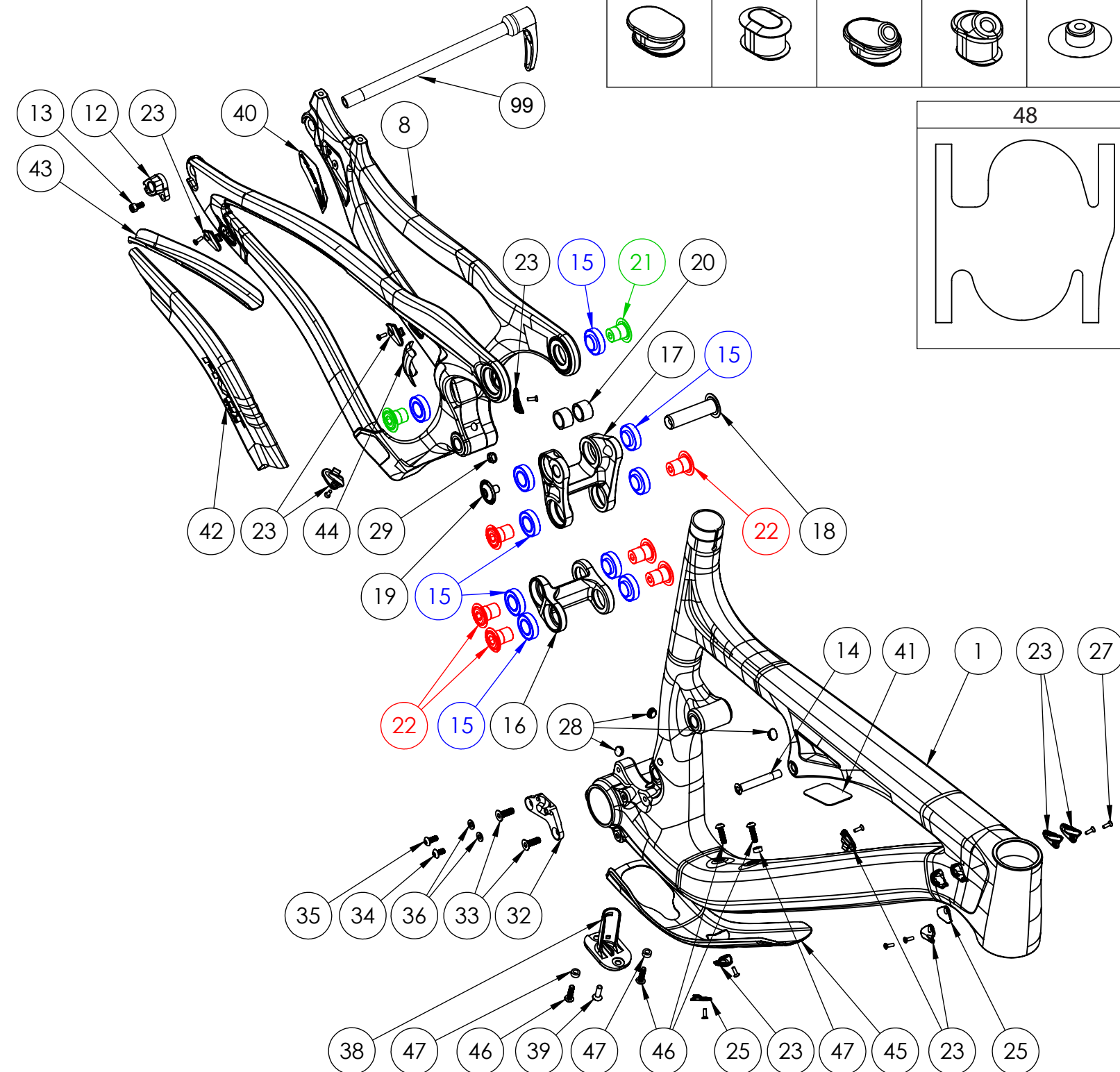
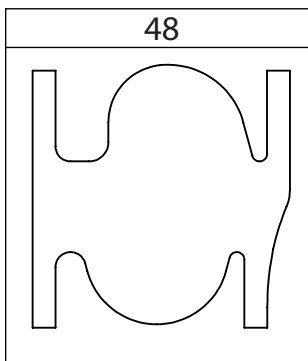
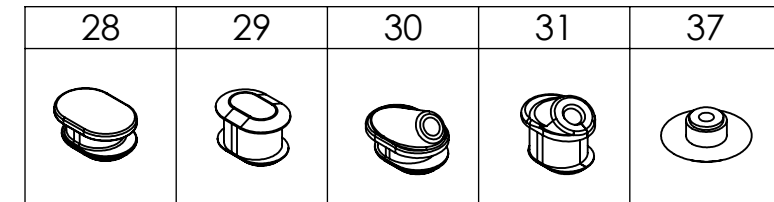
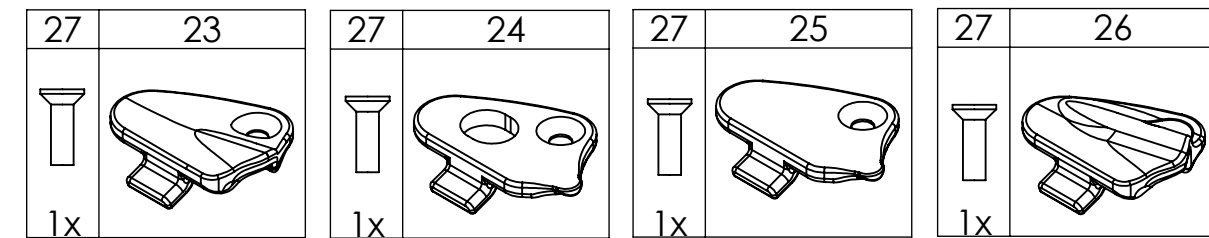


MACH 5.5 CARBON

NUMBER	PART NAME	DESCRIPTION	Torque	*
12	FP-RDH-TA-12MM-BLK-V3	Rear Derailleur Hanger 12mm TA		
13	FP-SCW-SCK-M5*10	M5x10 Rear Derailleur Hanger Screw	7 Nm (5 lb-ft)	○
14	FP-BLT-M8*54-BLK	M8x54 Front Shock Bolt	13 Nm (10 lb-ft)	●
15	FP-BRG-6902-LLUMAXECN	28mm 6902 Ext'd Max-E Bearing	**	
16	FP-LNK-LL-BLK-V4-R1	34mm Out-to-Out Lower Link V2 (+6mm Front Width)		
17	FP-LNK-UL-60MM-DSM-V2	60mm Direct Shock Mount Upper Link		
18	FP-PIN-SHK-M8*150-BLK	15x58mm M8 Rear Shock Pin	13 Nm (10 lb-ft)	□
19	FP-BLT-M8*12-BLK	M8x12 Rear Shock Bolt	13 Nm (10 lb-ft)	□
20	FP-WSH-SPC-M15*13	M15x13 Rear Shock Spacer		
21	FP-BLT-M14*17-BLK	M14x17 Upper Link Bolt	35 Nm (27 lb-ft)	□
22	FP-BLT-M14*20-BLK-V2	M14x20 Lower Link Bolt	35 Nm (27 lb-ft)	□
23	FP-CLM-MECH-FRM-V1	Internal Routing Cable Clamp		
24	FP-CLM-DI2-FRM-V1	Internal Routing Di2 Clamp		
25	FP-CVR-MECH-FRM-V2	Internal Routing Hole Cover		
26	FP-CLM-DUAL-FRM-V1	Internal Routing Dual Clamp		
27	FP-SCW-FLT-M3*10	M3x10 Cable Clamp Screw (Included w/ Clamp)		
28	FP-PLG-DI2-7*8*2.5	7x8mm Di2 Plug		
29	FP-PLG-DI2-7*8*5	7x8mm Di2 Plug Ext'd		
30	FP-GDE-DI2-7*8*2.5*2.5	7x8mm Di2 Wire Guide		
31	FP-GDE-DI2-7*8*5*2.5	7x8mm Di2 Wire Guide Ext'd		
32	FP-FDM-ETYPE-V2-R1	E-type FD Mount Adapter		
33	FP-SCW-FLT-M6*12	M6x12 E-type FD Mount Adapter Screw	10 Nm (7 lb-ft)	□
34	FP-SCW-BTN-M5*10	M5x10 E-type FD Mounting Screw	3 Nm (26 in-lb)	□
35	FP-SCW-BTN-M5*12	M5x12 E-type FD Mounting Screw	3 Nm (26 in-lb)	□
36	FP-WSH-51*100*1W	M5 E-type FD Mounting Washers		
37	FP-PLG-MNT-6MM	6mm Plug for E-type FDM		
38	FP-CVR-DI2-DT-V1	Di2 Downtube Battery Holder		
39	FP-SCW-FLT-M5*16	M5x16 Di2 DT Battery Cover Screws (Included with cover)		
40	FP-PLG-CS-ACL-V1	Fox Live Chanistay Accelerometer Plug		
41	FOX LIVE SHOCKTAB COVER	Fox Live Shocktab Sticker		
42	M5.5C CS GUARD	Mach 5.5C Chainstay Protector		
43	M5.5C SS GUARD	Mach 5.5C Seatstay Protector		
44	M5.5C UR GUARD	Mach 5.5C Upright Protector		
45	M5.5C DT GUARD	Mach 5.5C Downtube Protector		
46	PIVOT WB BOLTS V2	M5x0.8x18 Water Bottle Bolts		
47	PIVOT WB BOLT SPACER	M5 Water Bottle Bolt Spacer		
48	FP-PRO-34MM-LL-V1-R1	34mm Lower Link Protector		
99	DT SWISS 148 RWS	DT SWISS 148 RWS		○



** See Bearing Assembly Procedure located in the tech specs section at www.pivotcycles.com

* ○ = grease ● = anti-seize ◐ = anti-seize or grease □ = loctite 243