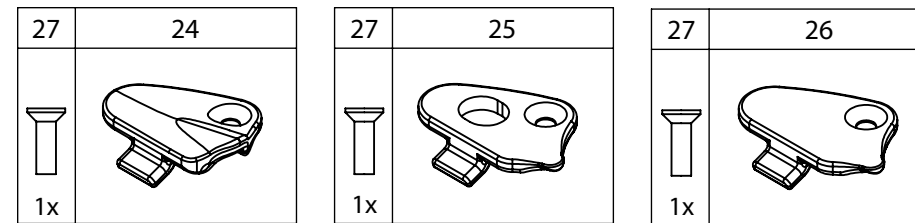
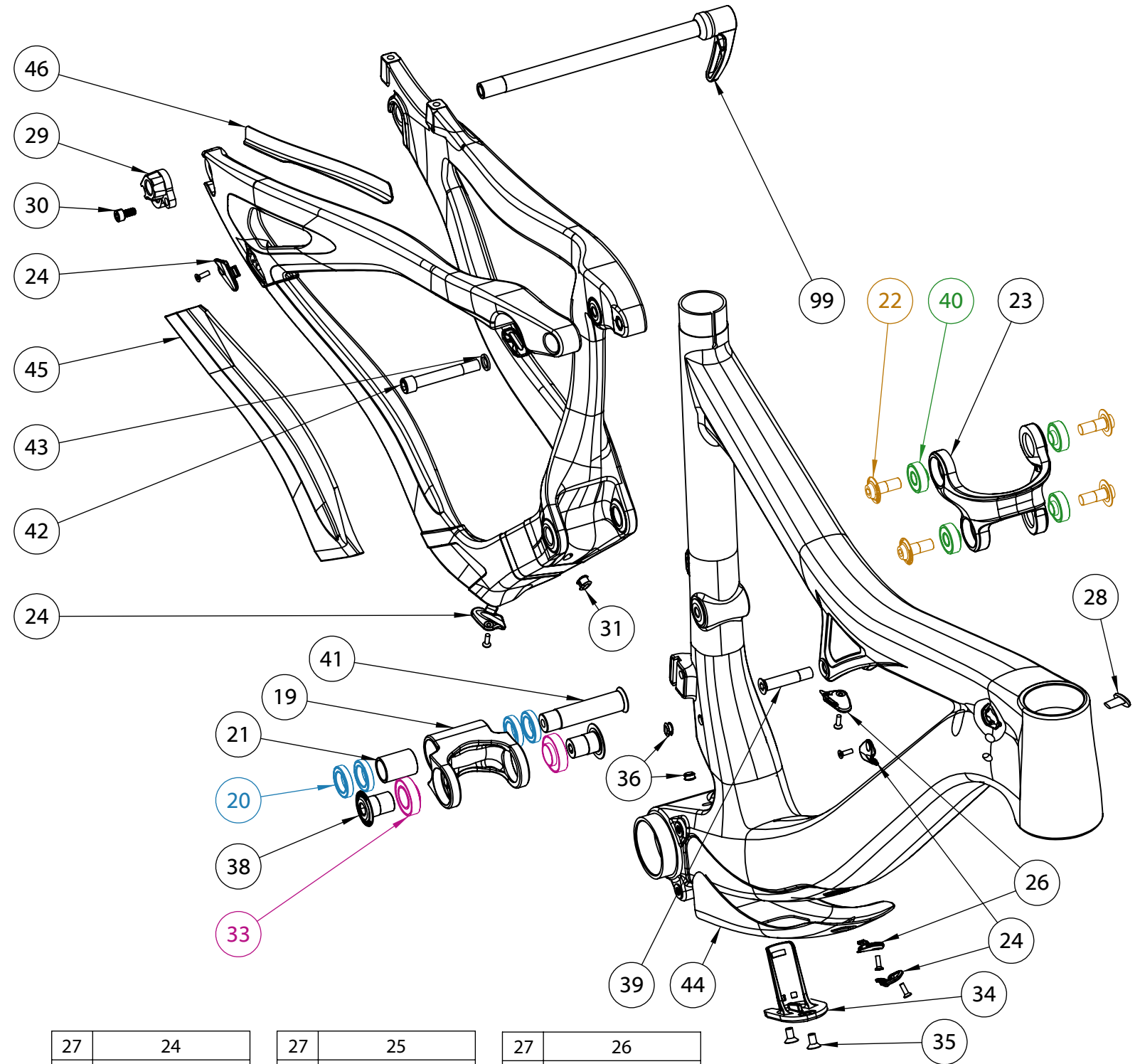


**MACH 429 C SL V2**

NUMBER	PART NAME	DESCRIPTION	Torque	*
19	FP-LNK-LL-BLK-V2-R1	34mm In-to-Out Lower Link		
20	FP-BRG-6802-LLBMAX	6802 Std. Lower Link Rear Bearing		
21	FP-SLV-LL-25MM	25mm Lower Link Bearing Sleeve		
22	FP-BLT-M8*20-BLK	M8x20 Upper Link Bolt	13 Nm (10 lb-ft)	●
23	FP-LNK-UL-50MM-V2-R2	50mm Out-to-Out Upper Link		
24	FP-CLM-MECH-FRM-V1	Internal Routing Cable Clamp		
25	FP-CLM-DI2-FRM-V1	Internal Routing Di2 Clamp		
26	FP-CVR-MECH-FRM-V2	Internal Routing Hole Cover		
27	FP-SCW-FLT-M3*10	M3x10 Cable Clamp Screw (Included w/ Clamp)		
28	FP-PLG-MECH-5.5MM	5.5mm Rubber Cable Plug		
29	FP-RDH-TA-12MM-BLK-V1	Rear Derailleur Hanger 12mm TA		
30	FP-SCW-SCK-M5*10	M5x10 Rear Derailleur Hanger Screw	7 Nm (5 lb-ft)	□
31	FP-PLG-DI2-7*8*5	7x8mm Di2 Plug Ext'd		
32	FP-GDE-DI2-7*8*5*2.5	7x8mm Di2 Wire Guide Ext'd		
33	FP-BRG-6902-LLUMAXECN	28mm 6902 Ext'd Lower Link Front Bearing		
34	FP-CVR-DI2-DT-V1	Di2 Downtube Battery Holder		
35	FP-SCW-FLT-M5*16	M5x16 Di2 DT Battery Cover Screws		
36	FP-PLG-DI2-7*8*2.5	7x8mm Di2 Plug		
37	FP-GDE-DI2-7*8*2.5*2.5	7x8mm Di2 Wire Guide		
38	FP-BLT-M14*20-BLK-V2	M14x20 Lower Link Front Bolt	35 Nm (27 lb-ft)	□
39	FP-BLT-M8*38-BLK	M8x38 Front Shock Bolt	13 Nm (10 lb-ft)	●
40	FP-BRG-608-LLUMAXE	22mm OD 608 Ext'd Upper Link Bearing		
41	FP-BLT-M14*66-BLK	M14x66 Lower Link Pin	35 Nm (27 lb-ft)	●
42	FP-BLT-M8*55-BLK	M8x55 Rear Shock Bolt	13 Nm (10 lb-ft)	●
43	FP-WSH-8I*120*1W	M8 Shock Bolt Washer		
44	FP-PRO-429CSLV2-DT-M-V2-R1	Mach 429 Carbon Downtube Guard V2 (Medium)		
44	FP-PRO-429CSLV2-DT-SM-V2-R1	Mach 429 Carbon Downtube Guard V2 (Small)		
44	FP-PRO-429CSLV2-DT-L-V2-R1	Mach 429 Carbon Downtube Guard V2 (Large)		
44	FP-PRO-429CSLV2-DT-XL-V2-R1	Mach 429 Carbon Downtube Guard V2 (X-Large)		
45	FP-PRO-429C-CS-V2-R1	Mach 429 Carbon Chainstay Guard V2		
46	FP-PRO-429CSLV2-SS-V2-R1	Mach 429 Carbon Seatstay Guard V2		
99	DT SWISS 148 RWS	148x12mm RWS Thru Axle		



\* ○ = grease ● = anti-seize ● = anti-seize or grease □ = loctite 243