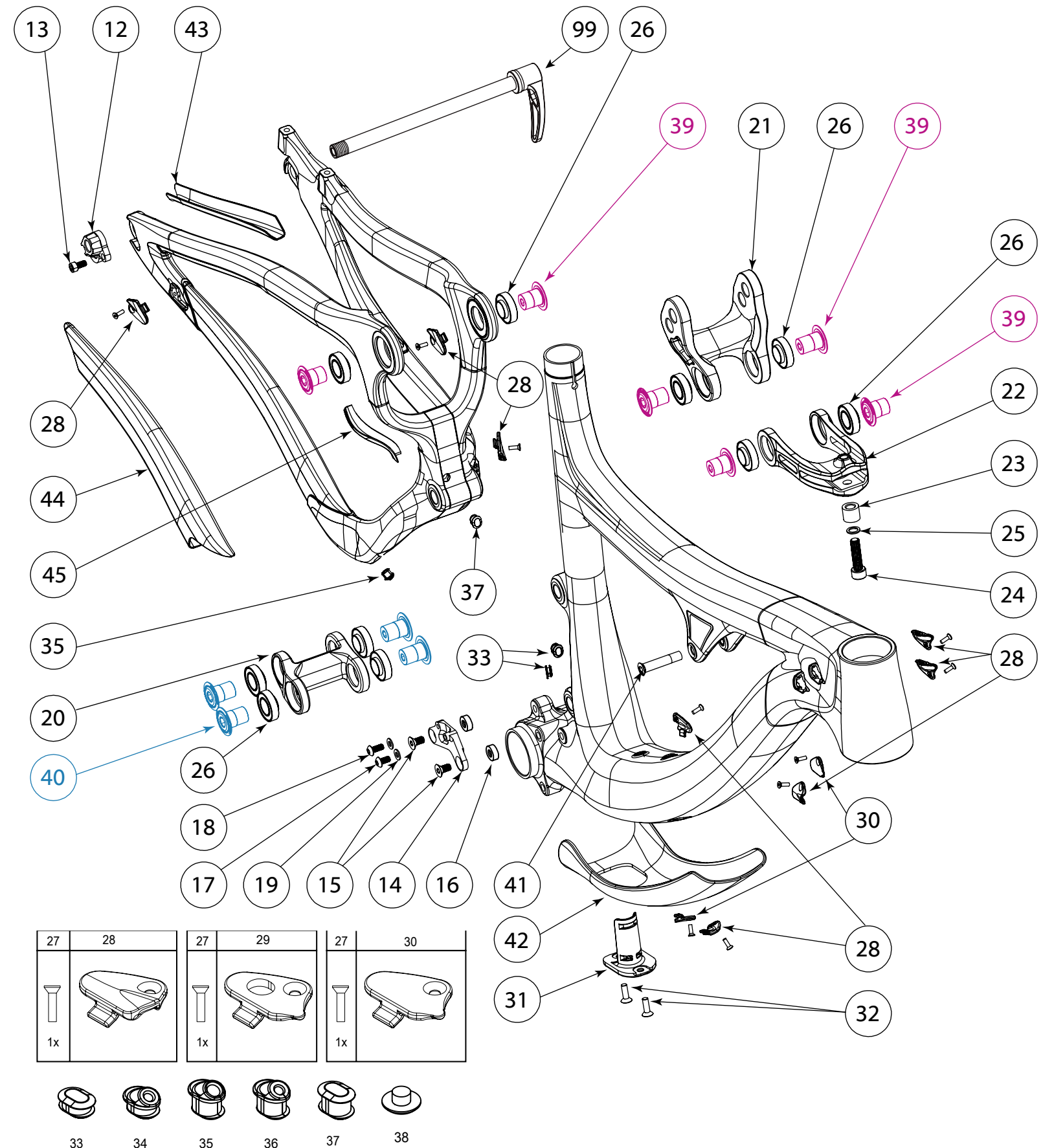


**SWITCHBLADE C**

NUMBER	PART NAME	DESCRIPTION	Torque	*
12	FP-RDH-TA-12MM-BLK-V1	Rear Derailleur Hanger 12mm TA		
13	FP-SCW-SCK-M5*10	M5x10 Rear Derailleur Hanger Screw	7 Nm (5 lb-ft)	○
14	FP-FDM-ETYPE-V2-R1	E-type FD Mount Adapter		
15	FP-SCW-FLT-M6*20	M6x20 E-type FD Mount Adapter Screw	10 Nm (7 lb-ft)	□
16	FP-WSH-SPC-M6*5.5	M6x5.5 Spacer		
17	FP-SCW-BTN-M5*10	M5x10 E-type FD Mounting Screw	3 Nm (26 in-lb)	□
18	FP-SCW-BTN-M5*12	M5x12 E-type FD Mounting Screw	3 Nm (26 in-lb)	□
19	FP-WSH-51*100*1W	M5 E-type FD Mounting Washers		
20	FP-LNK-LL-BLK-V4-R1	34mm Out-to-Out Lower Link V2		
21	FP-LNK-UL-67MM-V1-R1	67mm Upper Link		
22	FP-CLV-94MM-V2-R1	94mm Clevis		
23	FP-PIN-CLV-M8*150-BLK-R2	M8 Clevis Shock Adapter Pin		○
24	FP-SCW-SCK-M8*30-R1	M8x30 Clevis Screw	28 Nm (21 lb-ft)	●
25	FP-WSH-81*120*1W	M8 Shock Bolt Washer (For Clevis Screw)		
26	FP-BRG-6902-LLUMAXECN	28mm 6902 Ext'd Bearing	**	
27	FP-SCW-FLT-M3*10	M3x10 Cable Clamp Screw (Included w/ Clamp)		
28	FP-CLM-MECH-FRM-V1	Internal Routing Cable Clamp		
29	FP-CLM-DI2-FRM-V1	Internal Routing Di2 Clamp		
30	FP-CVR-MECH-FRM-V2	Internal Routing Hole Cover		
31	FP-CVR-DI2-DT-V1	Di2 Downtube Battery Holder		
32	FP-SCW-FLT-M5*16	M5x16 Di2 DT Battery Cover Screws		
33	FP-PLG-DI2-7*8*2.5	7x8mm Di2 Plug		
34	FP-GDE-DI2-7*8*2.5*2.5	7x8mm Di2 Wire Guide		
35	FP-GDE-DI2-7*8*5*3.9	7x8mm Cable Guide Ext'd		
36	FP-GDE-DI2-7*8*5*2.5	7x8mm Di2 Wire Guide Ext'd		
37	FP-PLG-DI2-7*8*5	7x8mm Di2 Plug Ext'd		
38	FP-PLG-MNT-6MM	6mm Plug for E-type FDM		
39	FP-BLT-M14*17-BLK	M14x17 Upper Link Bolt	35 Nm (27 lb-ft)	□
40	FP-BLT-M14*20-BLK-V2	M14x20 Lower Link Bolt	35 Nm (27 lb-ft)	□
41	FP-BLT-M8*38-BLK	M8x38 Front Shock Bolt	13 Nm (10 lb-ft)	●
42	SWITCHBLADE DT GUARD S-XL	Switchblade Downtube Protector S-XL		
42	SWITCHBLADE DT GUARD XS	Switchblade Downtube Protector XS		
43	SWITCHBLADE SS GUARD	Switchblade Seatstay Protector		
44	SWITCHBLADE CS GUARD	Switchblade Chainstay Protector		
45	SWITCHBLADE UR GUARD	Switchblade Upright Protector		
99	DT SWISS 157 RWS	157X12mm RWS Thru Axle		○



\*\* See Bearing Assembly Procedure located in the tech specs section at [www.pivotcycles.com](http://www.pivotcycles.com)

\* ○ = grease ● = anti-seize ◐ = anti-seize or grease □ = loctite 243