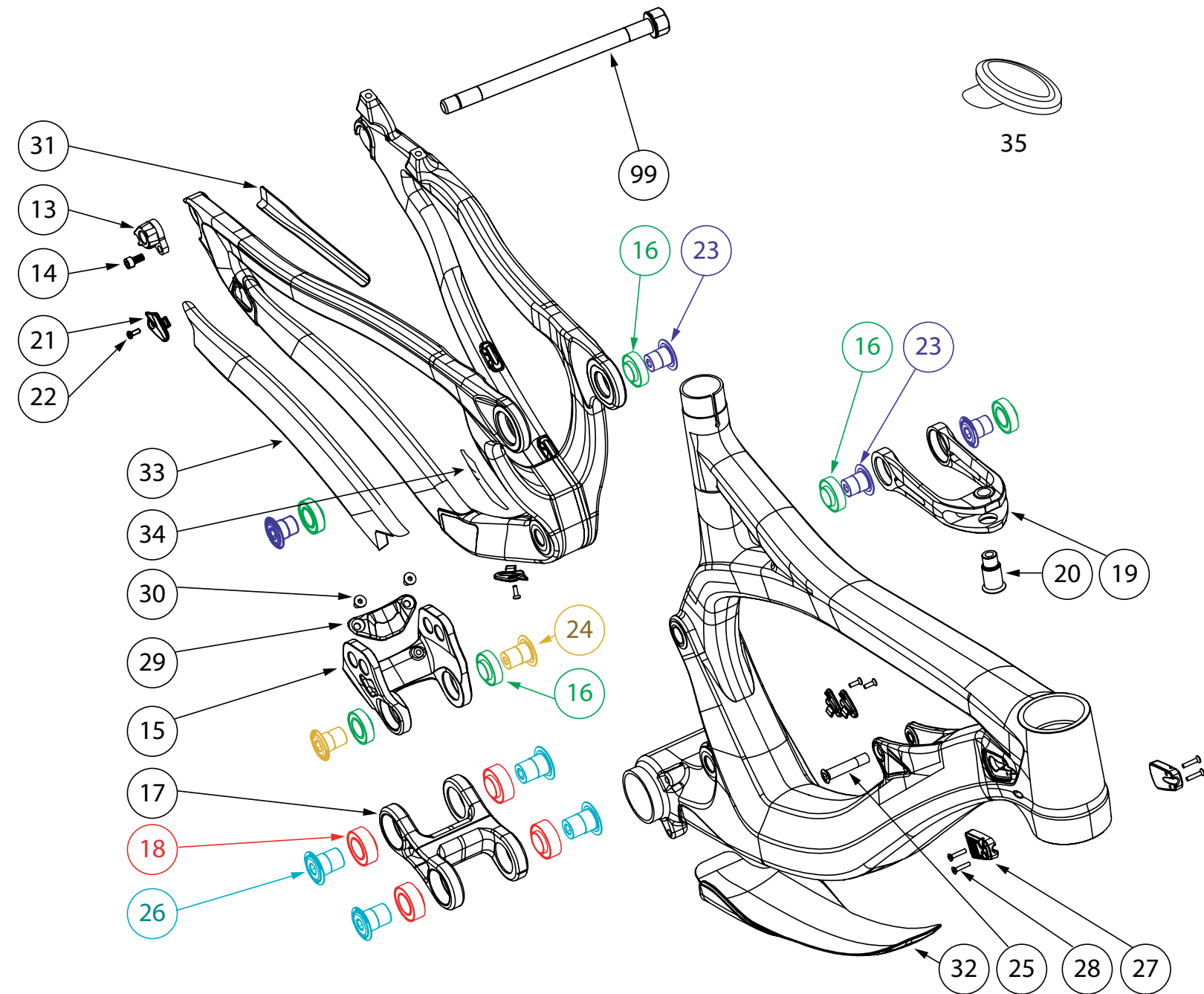


PHOENIX C V2

NUMBER	PART NAME	DESCRIPTION	Torque	*
13	FP-RDH-TA-12MM-BLK-V1	Rear Derailleur Hanger 12mm TA		
14	FP-SCW-SCK-M5*10	M5x10 Rear Derailleur Hanger Screw	7 Nm (5 lb-ft)	□
15	FP-LNK-UL-43MM-V1-R1	43mm Offset Upper Link		
16	FP-BRG-6902-LLUMAXECN	28mm 6902 Ext'd Upper Link Bearing		
17	FP-LNK-LL-BLK-V7-R1	70mm Out-to-Out Lower Link		
18	FP-BRG-3903-LLUE	30mm 3903 Ext'd Lower Link Bearing	35 Nm (27 lb-ft)	□
19	FP-CLV-109MM-V1-R1	109mm Clevis		
20	FP-PIN-CLV-M12*150-BLK-R1	M12 Clevis Shock Pin	24 Nm (18 lb-ft)	○
21	FP-CLM-MECH-FRM-V1	Internal Routing Cable Clamp		
22	FP-SCW-FLT-M3*10	M3x10 Cable Clamp Screw (Included w/ Clamp)		
23	FP-BLT-M14*17-BLK	M14x17 Upper Link Bolt	35 Nm (27 lb-ft)	□
24	FP-BLT-M14*20-BLK-V2	M14x20 Upper Link Clevis Bolt	35 Nm (27 lb-ft)	□
25	FP-BLT-M8*38-BLK	M8x38 Front Shock Bolt	13 Nm (10 lb-ft)	●
26	FP-BLT-M16*22-BLK-V2	M16x22 Lower Link Bolt		
27	FP-PRO-PHXC-V2-HT-V1-R1	Phoenix Carbon 27.5 Headtube Guard		
28	FP-SCW-FLT-M3*15	M3x15 Headtube Guard Screw		
29	FP-PRO-PHXC-BMP-V1-R1	Phoenix Carbon 27.5 Bottom Out Bumper		
30	FP-SCW-FLT-M5*10	M5x10 Bottom-out Bumper Mounting Screw		□
31	FP-PRO-PHXC-V2-SS-V2-R1	Phoenix Carbon 27.5 Seatstay Guard		
32	FP-PRO-PHXC-V2-DT-V1-R1	Phoenix Carbon 27.5 Downtube Guard		
33	FP-PRO-PHXC-V2-CS-V2-R1	Phoenix Carbon 27.5 Chainstay Guard		
34	FP-PRO-PHXC-UR-V1-R1	Phoenix Carbon 27.5 Upright Guard		
35	FP-PLG-MECH-5.5MM	5.5mm Rubber Cable Plug		
99	157MM THROUGH AXLE	157mm Thru Axle		



* ○ = grease ● = anti-seize ◐ = anti-seize or grease □ = loctite 243