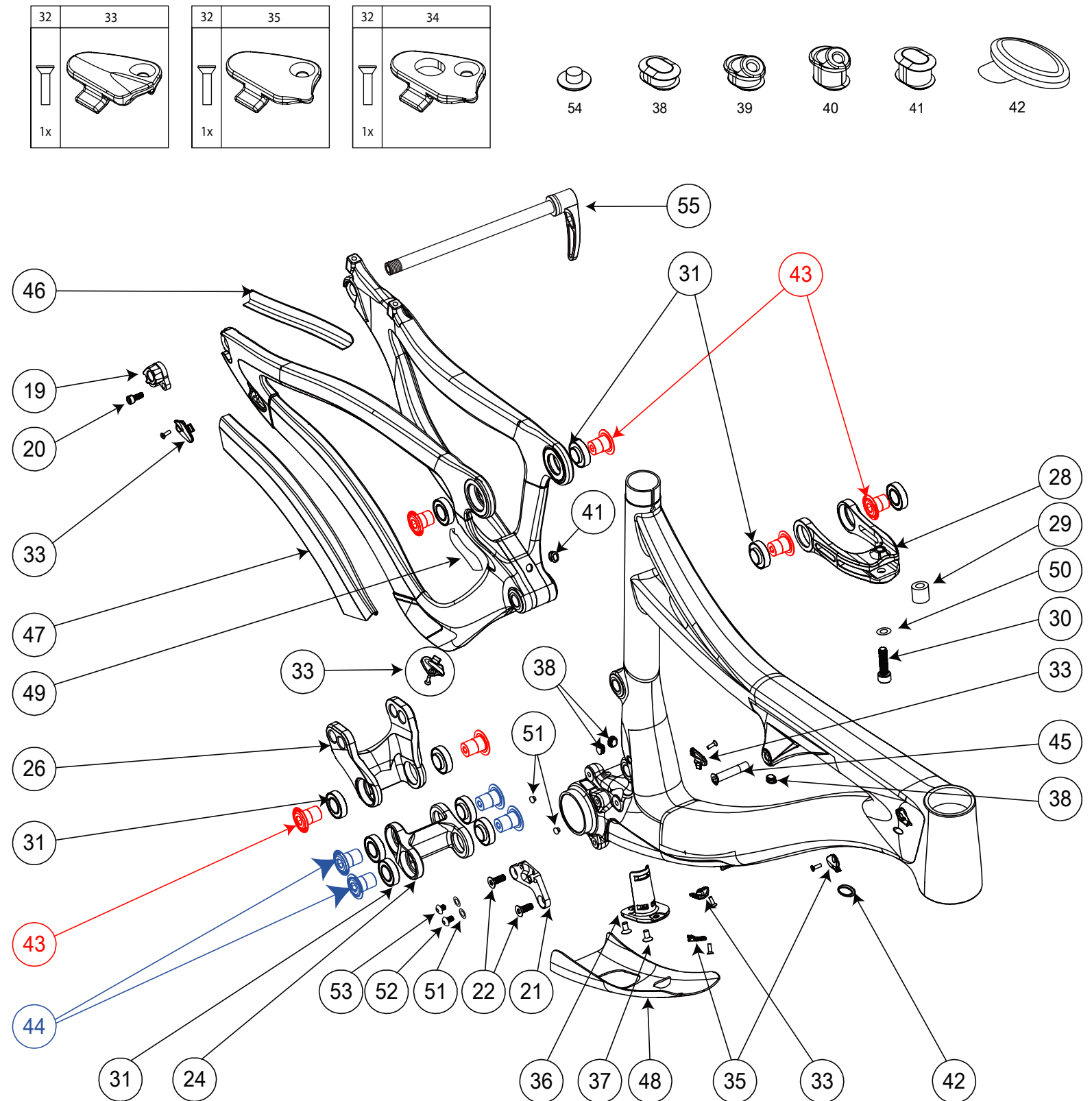


**MACH 6 CV2**

NUMBER	PART NAME	DESCRIPTION	Torque	*
19	FP-RDH-TA-12MM-BLK-V1	REAR DERAILLEUR HANGER THROUGH AXLE 12MM BLACK V1		
20	FP-SCW-SCK-M5*10	SCREW SOCKET 5X10	7 Nm (5 lb-ft)	○
21	FP-FDM-ETYPE-V2-R1	FD MOUNT E TYPE V2 REV1		
22	FP-SCW-FLT-M6*12	FLATHEAD SCREW M6 x 12L	10 Nm (7 lb-ft)	□
24	FP-LNK-LL-BLK-V4-R1	LINK LOWER BLACK VER4 REV1		
26	FP-LNK-UL-57MM-V2-R1	LINK UPPER 57MM VER2 REV1		
28	FP-CLV-94MM-V2-R1	CLEVIS 94MM VER2 REV1		
29	FP-PIN-CLV-M8*150-BLK-R2	PIN CLEVIS 8X15 BLACK REV2		
30	FP-SCW-SCK-M8*30-R1	SCREW SOCKET 8X30	28 Nm (21 lb-ft)	●
31	FP-BRG-6902-LLUMAXECN	6902 LLU MAX-E CN		
32	FP-SCW-FLT-M3*10	SCW FLAT 3X10	**	
33	FP-CLM-MECH-FRM-V1	CLAMP MECHANICAL FRAME		
34	FP-CLM-DI2-FRM-V1	CLAMP DI2 FRAME		
35	FP-CVR-MECH-FRM-V2	COVER MECHANICAL FRAME V2		
36	FP-CVR-DI2-DT-V1	COVER DI2 DOWNTUBE V1		
37	FP-SCW-FLT-M5*16	SCREW FLAT 5x16		
38	FP-PLG-DI2-7*8*2.5	PLUG DI2 7X8X2.5		
39	FP-GDE-DI2-7*8*2.5*2.5	GUIDE DI2 7X8X2.5X2.5		
40	FP-GDE-DI2-7*8*5*2.5	GUIDE DI2 7X8X2.5X2.5		
41	FP-PLG-DI2-7*8*5	PLUG DI2 7X8X2.5		
42	FP-PLG-MECH-5.5MM	PLUG MECHANICAL 5.5MM		
43	FP-BLT-M14*17-BLK	BOLT 14X17 BLACK	35 Nm (27 lb-ft)	□
44	FP-BLT-M14*20-BLK-V2	BOLT 14*20 BLACK V2	35 Nm (27 lb-ft)	□
45	FP-BLT-M8*38-BLK	BOLT 8X38 BLACK	13 Nm (10 lb-ft)	●
46	M6CV2 SEATSTAY GUARD	M6CV2 SEATSTAY GUARD		
47	M6CV2 CHAINSTAY GUARD	M6CV2 CHAINSTAY GUARD		
48	M6CV2 XS/S/XL DT Guard	M6CV2 XS/S/XL DT Guard		
48	M6CV2 Medium DT Guard	M6CV2 MEDIUM DT GUARD		
48	M6CV2 Large DT Guard	M6CV2 LARGE DT GUARD		
49	M6CV2 Upright Guard	M6CV2 UPRIGHT GUARD		
50	FP-WSH-81*120*1W	WASHER 81 X 120 X 1W		
51	FP-WSH-51*100*1W	WASHER 51 X 100 X 1W		
52	FP-SCW-BTN-M5*12	SCREW BUTTON 5X12	3 Nm (26 in-lb)	□
53	FP-SCW-BTN-M5*10	SCREW BUTTON 5X10	3 Nm (26 in-lb)	□
54	FP-PLG-MNT-6MM	PLUG MOUNT 6MM		
55	DT SWISS 148 RWS	DT SWISS 148 RWS		○



\*\* See Bearing Assembly Procedure located in the tech specs section at www.pivotcycles.com

\* ○ = grease ● = anti-seize ● = anti-seize or grease □ = loctite 243