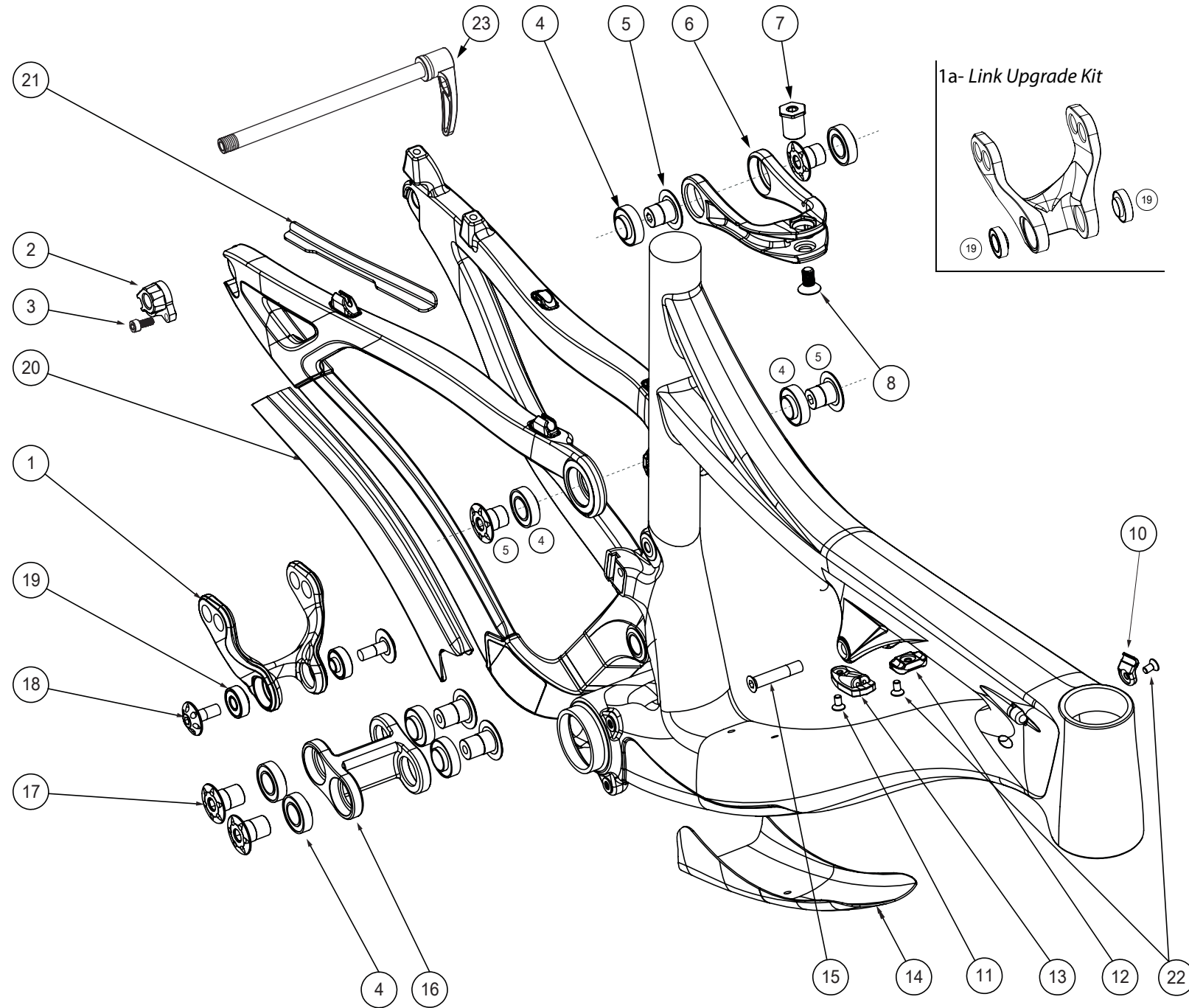


**MACH 6 C**

NUMBER	PART NAME	DESCRIPTION	Torque	*
1	FP-LNK-UL-57MM-V1-R1	LINK UPPER 57MM VER1 REV1		
1a	FP-LNK-UL-57MM-V1-R2	M6C UL 57MM V1 R2 HD		
2	FP-RDH-TA-12MM-BLK-V1	REAR DERAILLEUR HANGER THROUGH AXLE 12MM BLACK V1		
3	FP-SCW-SCK-M5*10	SCREW SOCKET 5X10	7 Nm (5 lb-ft)	□
4	FP-BRG-6902-LLUMAXECN	6902 LLU MAX-E CN		
5	FP-BLT-M14*17-GRY	BOLT 14X17 GRAY	35 Nm (27 lb-ft)	□
6	FP-CLV-94MM-V1-R1	CLEVIS 94MM VER1 REV1		
7	FP-PIN-CLV-M8*150-BLK-R1	PIN CLEVIS 8X15 BLACK REV1		
8	FP-SCW-FLT-M8*16	SCREW FLAT 8X16	32 Nm (23 lb-ft)	●
10	FP-CLM-MECH-HT-V1	CLAMP MECHANICAL HEADTUBE		
11	FP-SCW-FLT-M4*12	SCREW FLAT 4X12		
12	FP-CLM-MECH-TT-V1	CLAMP MECHANICAL TOPTUBE		
13	FP-STP-SHFT-V1	STOP SHIFTER V1		
14	MACH 429 CBN DOWNTUBE GUARD	MACH 429 CBN DOWNTUBE GUARD		
15	FP-BLT-M8*38-BLK	BOLT 8X38 BLACK	13 Nm (10 lb-ft)	●
16	FP-LNK-LL-BLK-V3-R1	LINK LOWER BLACK VER3 REV1		
17	FP-BLT-M14*20-GRY	BOLT 14X20 GRAY	35 Nm (27 lb-ft)	□
18	FP-BLT-M8*20-GRY	BOLT 8X20 GRAY	13 Nm (10 lb-ft)	□
19	FP-BRG-608-LLUMAXE	608 LLU MAX-E		
20	MACH 6 CBN CHAINSTAY GUARD	MACH 6 CBN CHAINSTAY GUARD		
21	MACH 6 CBN SEATSTAY GUARD V2	MACH 6 CBN SEATSTAY GUARD V2 (W/ RECESS)		
22	FP-SCW-FLT-M5*14	SCREW FLAT 5X14		
23	DT SWISS 142 RWS	DT SWISS 142 RWS		



\* ○ = grease ● = anti-seize ◐ = anti-seize or grease □ = loctite 243