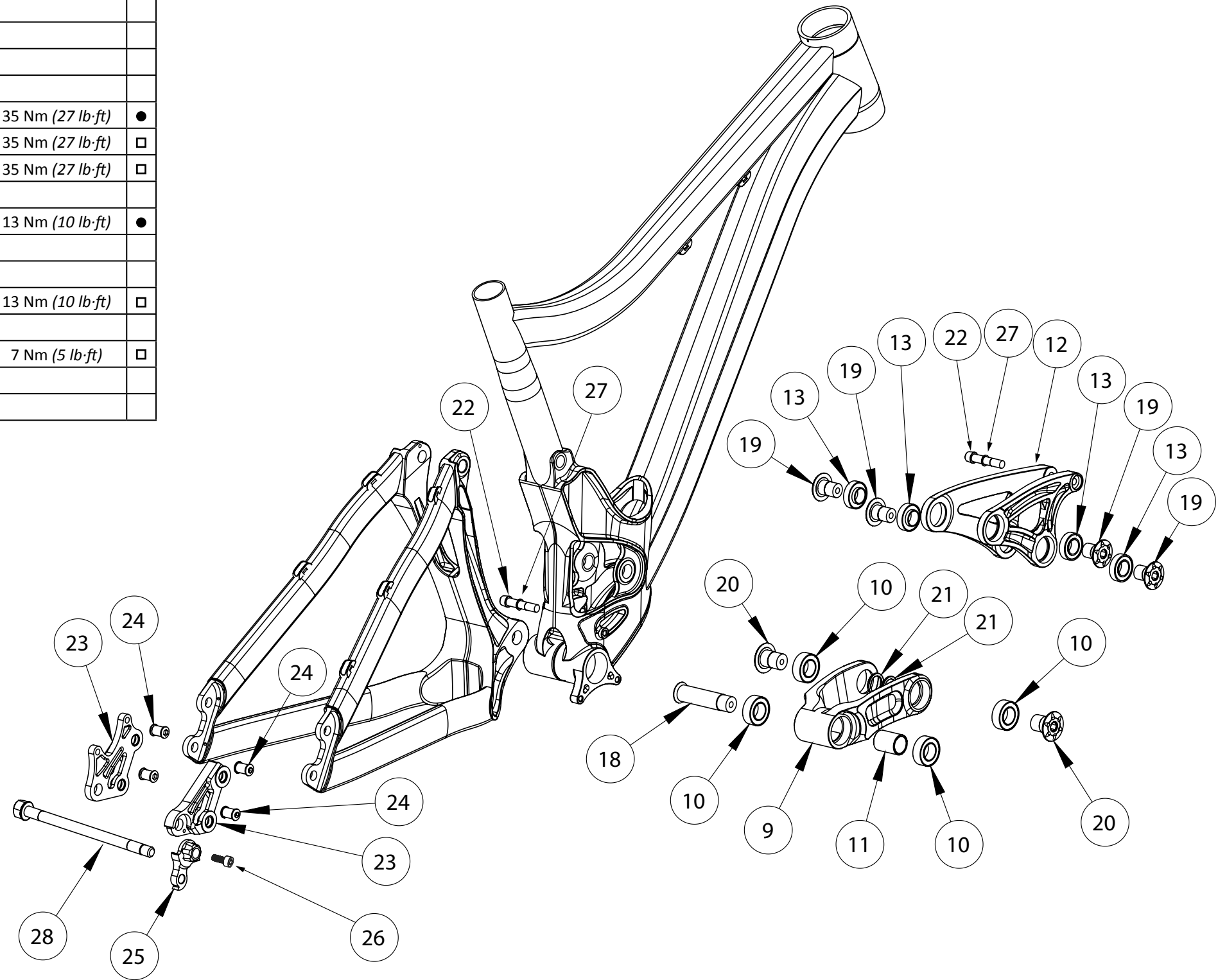


PHOENIX A

NUMBER	PART NAME	DESCRIPTION	Torque	*
9	FP-LNK-LL-SIL-V6-R1	LINK LOWER SILVER VER6 REV1		
10	FP-BRG-3903-LLU	3903 LLU		
11	FP-SLV-LL-28MM	SLEEVE LOWER LINK 28MM		
12	FP-LNK-UL-100MM-V1	LINK UPPER 100MM VER1		
13	FP-BRG-6902-LLUMAXECN	6902 LLU MAX-E CN		
18	FP-BLT-M16*70-BLK	BOLT 16X70 BLACK	35 Nm (27 lb-ft)	●
19	FP-BLT-M14*20-BLK-V1	BOLT 14*20 BLACK V1	35 Nm (27 lb-ft)	□
20	FP-BLT-M16*22-BLK-V1	BOLT 16X22 BLACK VER 1	35 Nm (27 lb-ft)	□
21	FP-WSH-171*230*2W	WASHER 171 X 230 X 2W		
22	FP-BLT-M8*39-SIL	BOLT 8X39 SILVER	13 Nm (10 lb-ft)	●
23	FP-DRO-PHX-SET-V1-R1	DROPOUT PHOENIX SET VER1 REV1		
23L	FP-DRO-PHX-SET-V2-R1	DROPOUT PHOENIX SET VER2 REV1		
24	FP-PIN-DRO-M8*100-BLK	PIN DROPOUT 8X10 BLACK	13 Nm (10 lb-ft)	□
25	FP-RDH-TA-12MM-SIL-V2	REAR DERAILLEUR HANGER THROUGH AXLE 12MM SILVER V2		
26	FP-SCW-SCK-M5*10	SCREW SOCKET 5X10	7 Nm (5 lb-ft)	□
27	FP-WSH-8I*120*1W	WASHER 8I X 120 X 1W		
28	157MM THROUGH AXLE	157MM THRU AXLE W/ WASHER		



* ○ = grease ● = anti-seize ◐ = anti-seize or grease □ = loctite 243