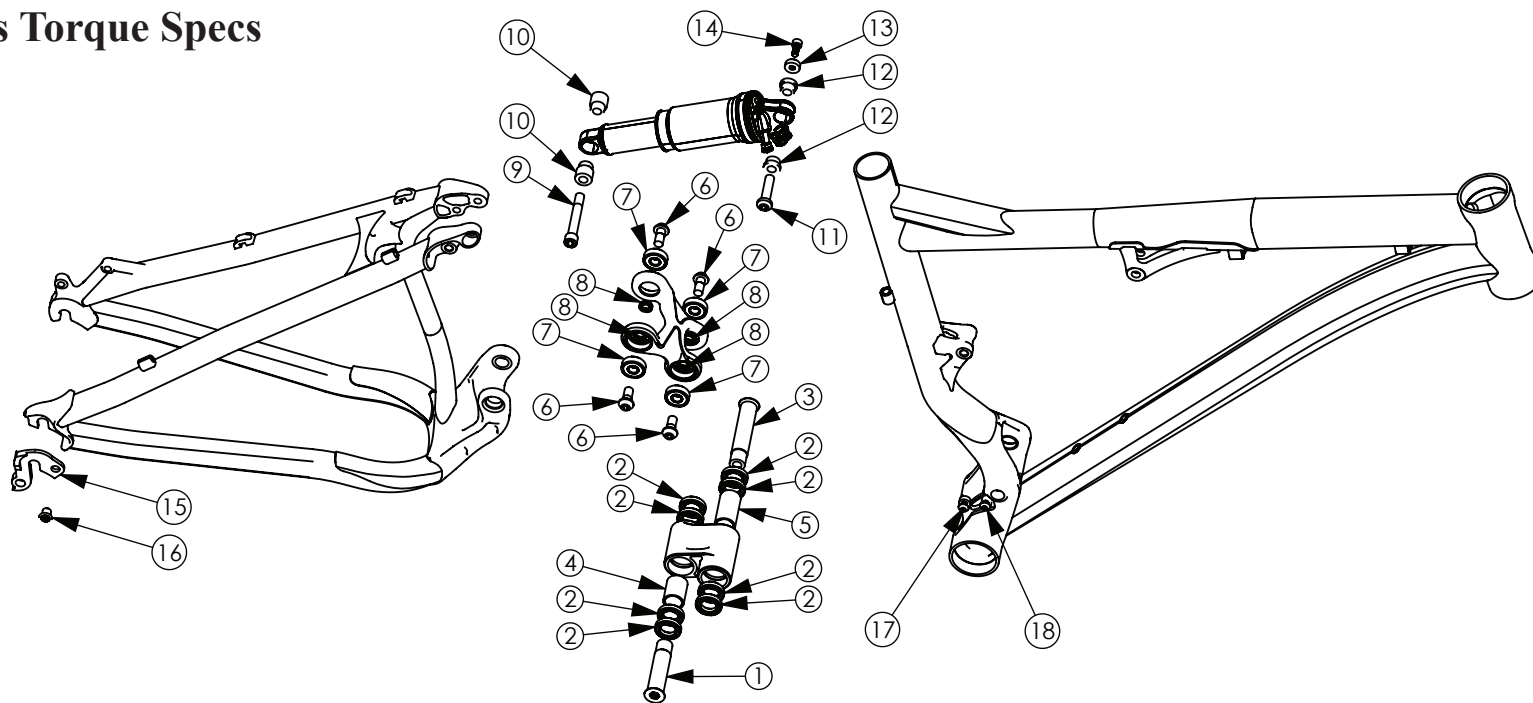


## Mach Series Torque Specs



ITEM NO.	PART NUMBER	DESCRIPTION	TORQUE/PREP	QTY.
1	MP0101	65mm Pivot Pin	35Nm, 306in-lb, 27ft-lb ANTI-SEIZE	1
2	BR0101	Enduro 6802 2RS MAX Bearing	GREASE FOR PRESS	8
3	MP0102	76mm Pivot Pin	35Nm, 306in-lb, 27ft-lb ANTI-SEIZE	2
4	MP0103	25MM Bearing Sleeve		1
5	MP0104	36mm Bearing Sleeve		1
6	MP0105	M8 x 17mm Custom SHCS	13Nm, 120in-lb, 10ft-lb, GREASE	4
7	BR0102	Enduro 608 2RS MAX Bearing	GREASE FOR PRESS	4
8	MP0106	8mm ID x 3mm Pivot Washer		4
9	MP0107	M8 x 55mm Custom Shock Bolt	13Nm, 120in-lb, 10ft-lb, ANTI-SEIZE	1
10	VP0101	Shock Spacer - 36mm Gap		2
11	MP0108	8mm OD Shock Mount Pin - M5	ANTI-SEIZE	1
12	VP0102	Shock Spacer - 22mm Gap		2
13	MP0109	Shock Mount Washer		1
14	VP0103	M5 x 12 Shock Mount Bolt	7Nm, 60in-lb, 5ft-lb BLUE LOCTITE	1
15	MP0110	Derailler Hanger		1
16	VP0103	8mm Chaining Bolt	7Nm, 60in-lb, 5ft-lb, GREASE	1
17	VP0104	M5 BHCS 10mm - FT DER MOUNT	5Nm, 42in-lb, 3.5ft-lb, GREASE	1
18	VP0105	M5 BHCS 12mm - FT DER MOUNT	5Nm, 42in-lb, 3.5ft-lb, GREASE	1