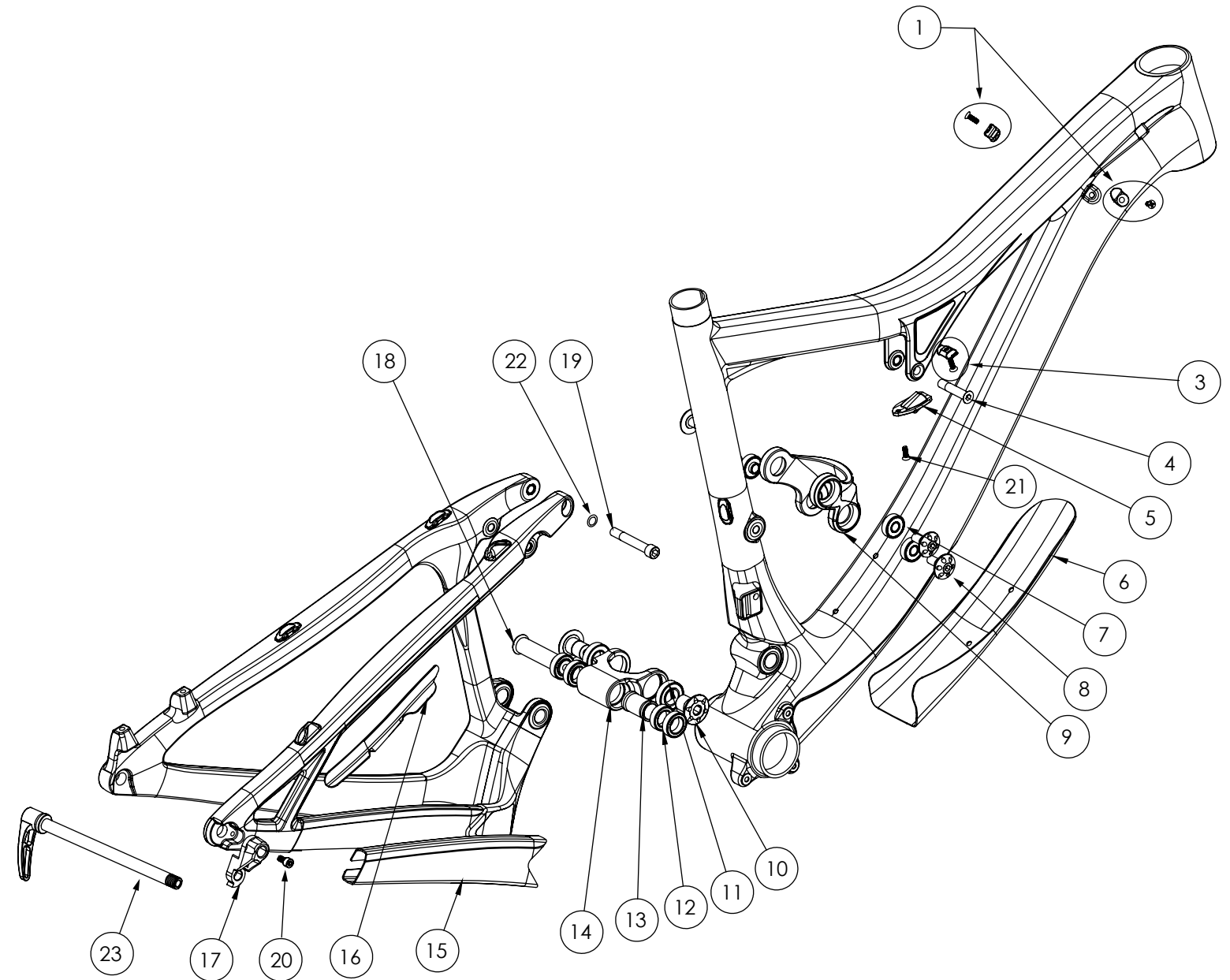


MACH 429 C

NUMBER	PART NAME	DESCRIPTION	Torque	*
1	FP-CLM-MECH-HT-V1	CLAMP MECHANICAL HEADTUBE		
3	FP-CLM-MECH-TT-V1	CLAMP MECHANICAL TOPTUBE		
4	FP-BLT-M8*38-BLK	BOLT 8X38 BLACK	13 Nm (10 lb-ft)	●
5	FP-STP-SHFT-V1	STOP SHIFTER V1		
6	MACH 429 CBN DOWNTUBE GUARD	MACH 429 CBN DOWNTUBE GUARD		
7	FP-BRG-608-LLUMAXE	608 LLU MAX-E		
8	FP-BLT-M8*20-BLK	BOLT 8X20 BLACK	13 Nm (10 lb-ft)	●
9	FP-LNK-UL-50MM-V2-R2	LINK UPPER 50MM VER2 REV2		
10	FP-BLT-M14*20-BLK-V2	BOLT 14*20 BLACK V2	35 Nm (27 lb-ft)	□
11	FP-BRG-6902-LLUMAXECN	6902 LLU MAX-E CN		
12	FP-BRG-6802-LLBMAX	6802 LLB MAX		
13	FP-SLV-LL-25MM	SLEEVE LOWER LINK 25MM		
14	FP-LNK-LL-BLU-V2-R1	LINK LOWER BLU VER2 R1		
15	MACH 429 CBN CHAINSTAY GUARD	MACH 429 CBN CHAINSTAY GUARD		
16	MACH 429 CBN SEATSTAY GUARD	MACH 429 CBN SEATSTAY GUARD		
17	FP-RDH-TA-12MM-BLK-V1	REAR DERAILLEUR HANGER THROUGH AXLE 12MM BLACK V1		
18	FP-BLT-M14*66-BLK	BOLT 14X66 BLACK	35 Nm (27 lb-ft)	●
19	FP-BLT-M8*55-BLK	BOLT 8X55 BLACK	13 Nm (10 lb-ft)	●
20	FP-SCW-SCK-M5*10	SCREW SOCKET 5X10	7 Nm (5 lb-ft)	□
21	FP-SCW-FLT-M4*12	SCREW FLAT 4X12		
22	FP-WSH-8I*120*1W	WASHER 8I X 120 X 1W		
23	DT SWISS 142 RWS	DT SWISS 142 RWS		



* ○ = grease ● = anti-seize ◐ = anti-seize or grease □ = loctite 243